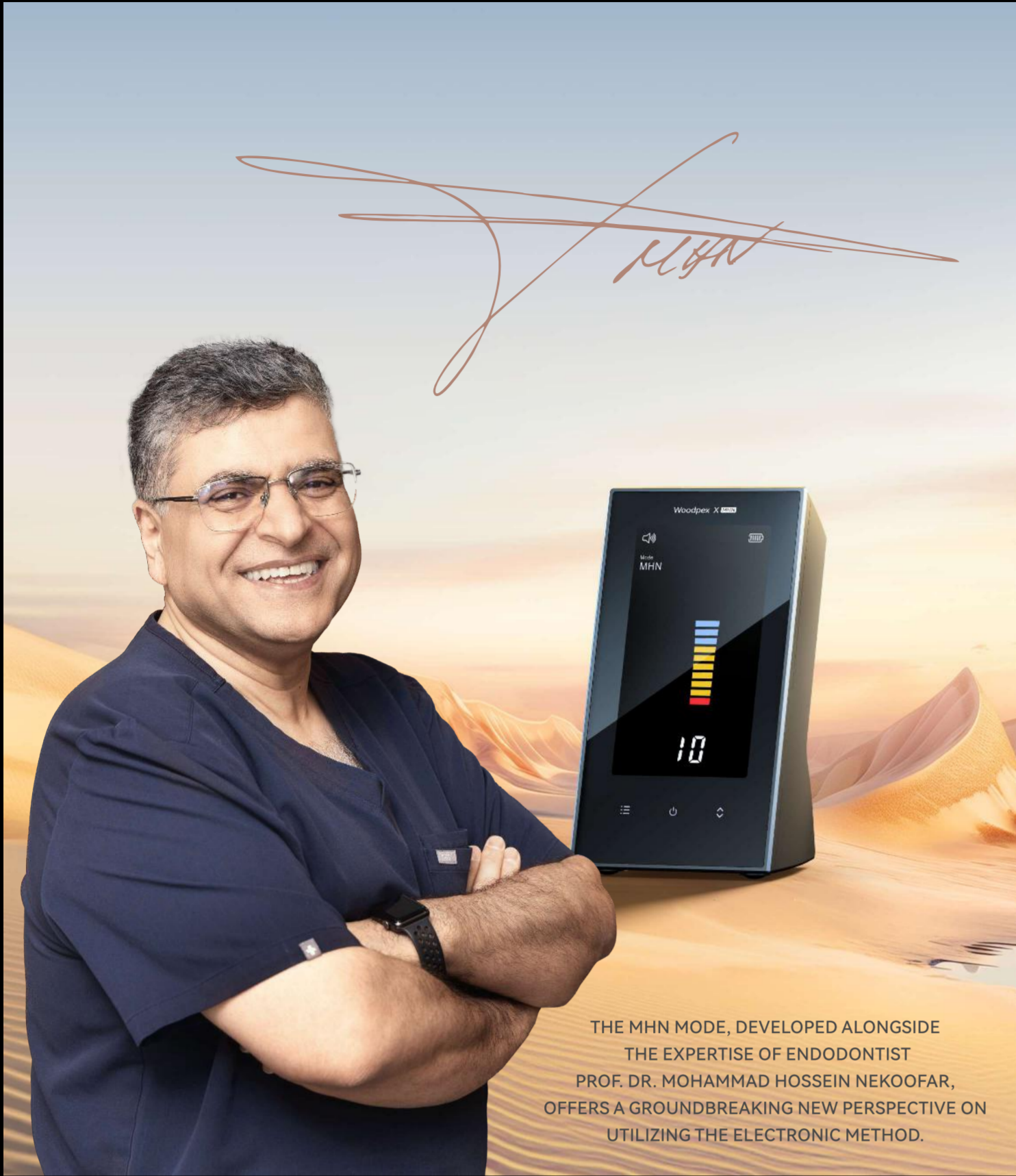




Woodpex X MHN

MICRO HOLE NEGOTIATOR



THE MHN MODE, DEVELOPED ALONGSIDE THE EXPERTISE OF ENDODONTIST PROF. DR. MOHAMMAD HOSSEIN NEKOOFAR, OFFERS A GROUNDBREAKING NEW PERSPECTIVE ON UTILIZING THE ELECTRONIC METHOD.

An Accurate and Precise Apex Locator¹

Empower your electronic working length determination with a cutting-edge digital circuit featuring a state-of-the-art fast central processing chip, a DSP processing module, and high-precision electronic components.

Apical Stop Level Settings: The apical alarm/apical stop can be customized to meet the operator's specific requirements.

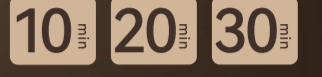
2 Sound levels



Apical stop Set



Sleep mode



Technical Specifications

- 3.8" LCD Screen

- Working Time: 7h

- Charging Time: 3h

- Battery: 3.7V/2000mAh

Comprehensive Configuration

Not autoclavable

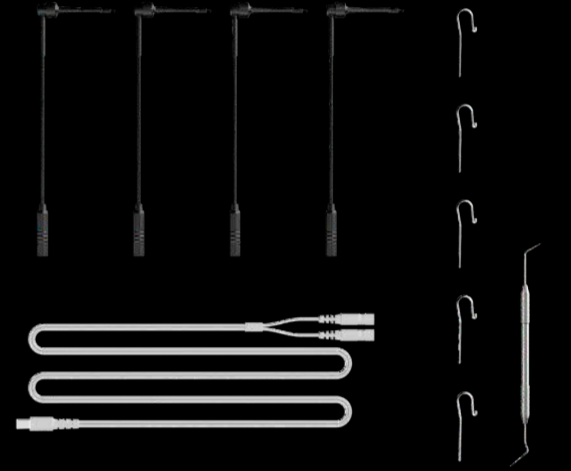
Measuring wire x 1 (Soft texture)

Autoclavable

File clip x 4 (Coated with biological silica gel)

Lip hook x 5 (Made of medical-grade stainless steel)

MHN explorer probe x1



1. De-Deus, et al. Clinical Accuracy and Precision of 3 Multifrequency Electronic Apex Locators Assessed through Micro-Computed Tomographic Imaging, Journal of Endodontics, Volume 49, Issue 5, 2023, Pages 487-495.



Guilin Woodpecker Medical Instrument Co., Ltd.
Information Industrial Park, Guilin National High-Tech Zone, Guilin, Guangxi, 541004 P.R, China

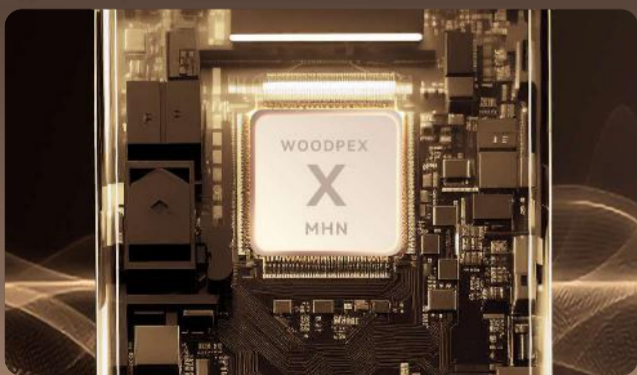
Sales Dept.: +86-773-5873196/2350599
After-sales Service Dept.: +86-0773-5827898
E-mail: woodpecker4@glwoodpecker.com
Website: <http://www.glwoodpecker.com>
ZMN-XC-152 V1.0

WHAT IS THE MHN MODE AND WHY SHOULD YOU USE IT?



Root Canal Entrance Localization:

The MHN mode utilizes an advanced electronic method to measure capacitance values, significantly enhancing signal detection sensitivity. When integrated with the operator's comprehension of pulp chamber morphology, magnification, X-ray, and CBCT images, the MHN mode becomes instrumental in effectively locating concealed root canal entrances.



Minimally Invasive Technique:

Preserve dentine and reduce the risk of perforation with access burs.

Crystal-Clear Display:

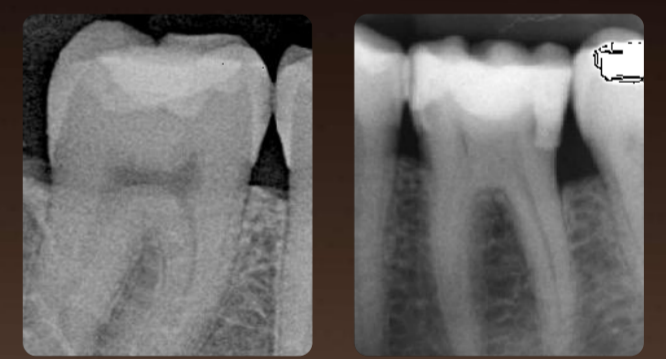
Featuring a clear screen and intuitive readings, the device allows you to master each step effortlessly, ensuring accuracy and confidence throughout the procedure.



APPLICATIONS OF MHN

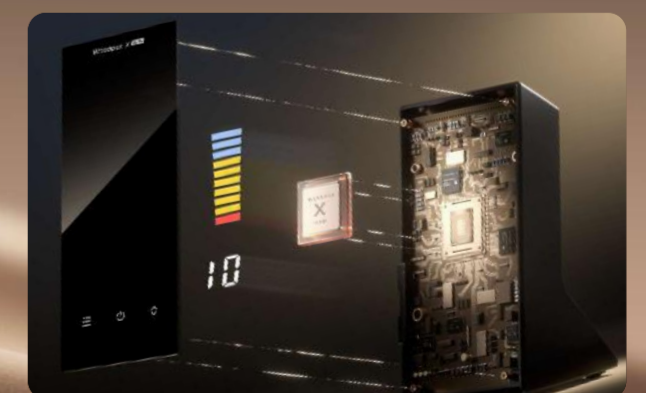
Locating The Calcified Root Canal Orifices

The MHN mode allows for the effective location of pulp chambers, even when they are partially calcified and present as disc-like structures, and also helps in finding the orifices of calcified canals.



Advanced Technology:

The MHN mode employs advanced technology to measure capacitance values, with the high sensitivity of its state-of-the-art processor accurately determining the electronic signal values. This cutting-edge technology is instrumental in catching even the most elusive calcified pulp chambers and helping to find the orifices of calcified canals.



Comprehensive Package

It includes the versatile MHN endodontic explorer probe, designed for optimal performance with the MHN Mode.

